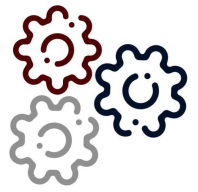


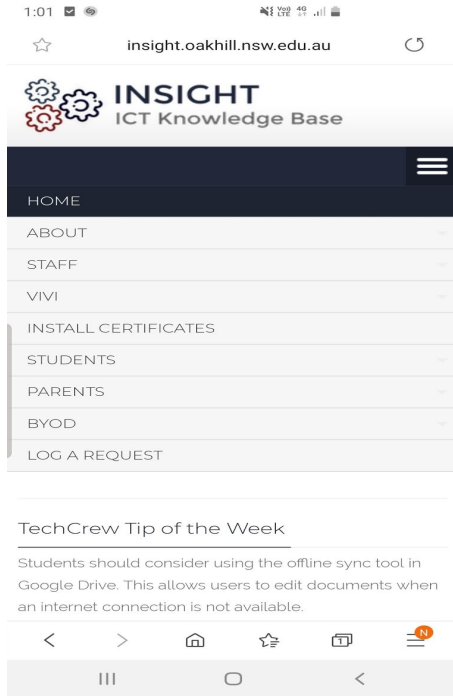


Connecting to the College Wireless Network using an Android device:

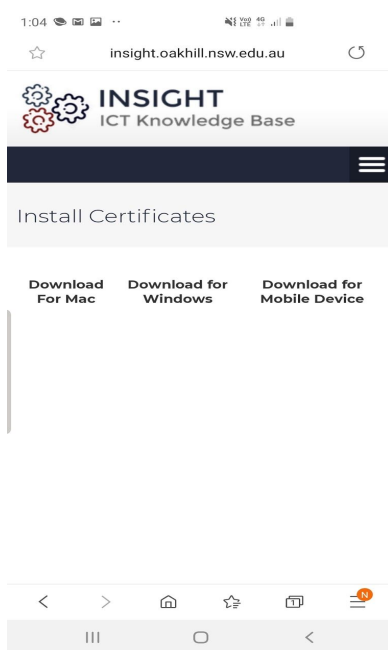


ICT SERVICES
OAKHILL COLLEGE

1. Open the built-in browser on your android device and navigate to the ICT Insight Webpage (<http://insight.oakhill.nsw.edu.au>).
2. Select the menu button (three white horizontal lines) and then select “Install Certificates”.

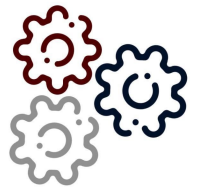


3. Once you have selected the “Install Certificates” option, you will be redirected to another page to download the file. Please select “Download for Mobile Device”.



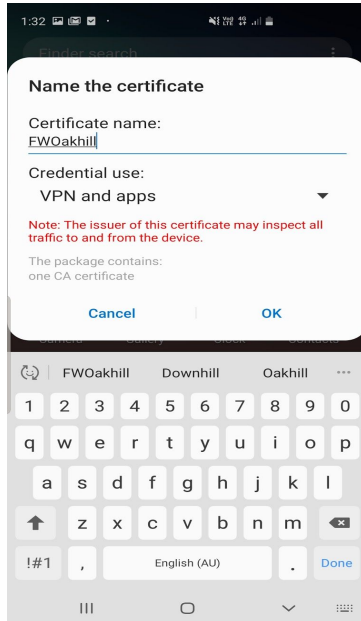


Connecting to the College Wireless Network using an Android device:

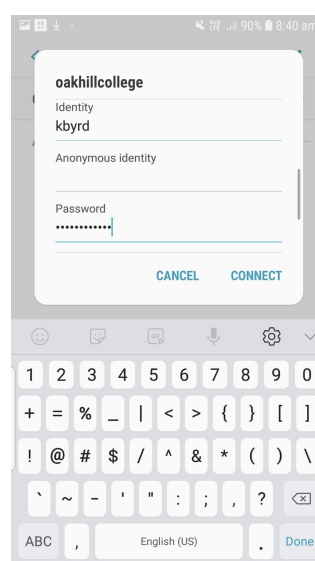
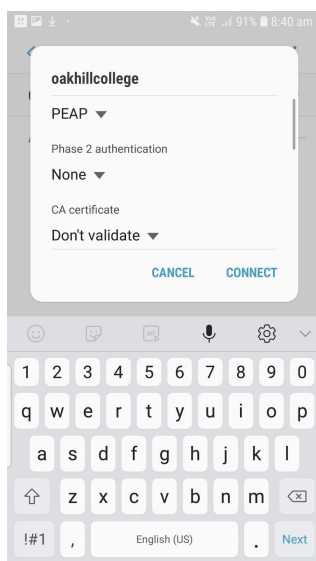


ICT SERVICES
OAKHILL COLLEGE

4. A new window will appear, requesting you name the Certificate. Enter the certificate name **FWOakhill** and ensure “Credential Use” is set to **VPN and apps**.

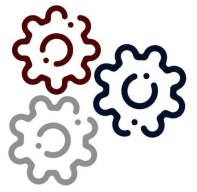


5. Once you have downloaded the certificate file to your device, you will be prompted to enter a pin code or password for security (if you don't already have one set).
6. Open your Wi-Fi settings and select “oakhillcollege” in the list of available networks.
Username: Oakhill Username
CA Certificate: Don't Validate
Password: *your oakhill account password*





Connecting to the College Wireless Network using an Android device:



ICT SERVICES
OAKHILL COLLEGE

8. Open a web browser and test you're able to access a site using https - eg.
<https://www.news.com.au> without any certificate errors/warnings being presented